



## Washer, Electrical Equipment Bond WEEB-LUG Installation Instructions



**Customer Service Department**  
7 Aviation Park Drive  
Londonderry, NH 03053  
1-800-346-4175  
1-603-647-5299  
(International)

Products are listed to UL 467, CAN/CSA-C22.2 No. 41UL US/Canadian standards for safety grounding and bonding equipment

Products are listed to UL 2703 standard for mounting systems, mounting devices, clamping/retention Devices, and ground lugs for use with flat-plate Photovoltaic modules and panels

### Mounting Requirements

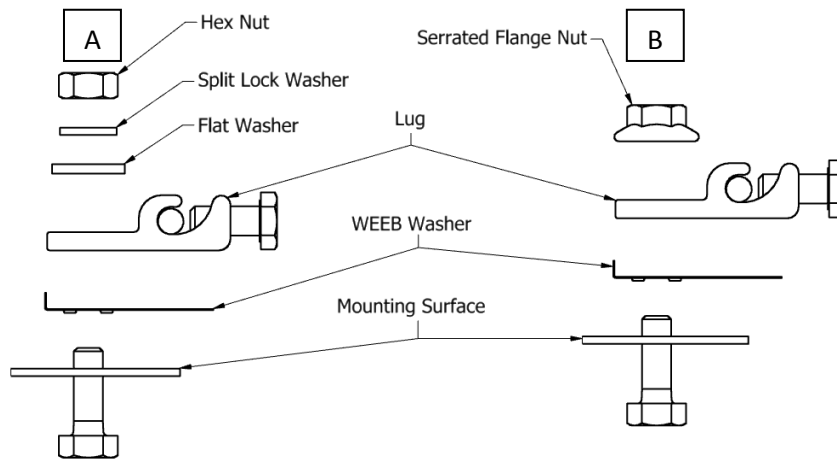


Figure 1: Minimum Hardware Required

WEEB-LUG-6.7 is packaged with required hardware as shown in stack “A” of Figure 1.

WEEB-LUG-8.0, WEEB-LUG-8.2 and WEEB-LUG-15.8 utilize 5/16” or M8 hardware and are approved with hardware stack “A” or “B” as shown above.\*

\*Lugs can be ordered complete with stack “A” hardware by adding suffix “AS” (assembled) or “UN” (unassembled)

All lugs suitable for use with 14-6AWG solid or stranded copper conductor when tightened to 5ft-lbs

Cat No.	Max OCPD (A)	Mounting Surface					Mounting Screw		Mounting-hole Range	
		Min Profile (w x l)	Min Thk (in)	Max Thk (in)	Mtl	Surface Prep	Size	Tightening torque (lbs.-in)	Min (mm)	Max (mm)
WEEB-LUG-6.7	200	18mm x 20mm	.06”	.25”	AL	Anodized	¼”	120	6mm	9mm
			.06”	.25”	Steel	Galvanized				
WEEB-LUG-8.0	200	22mm x 20mm	.06”	.25”	AL	Anodized	5/16” M8	120	7.85mm	10mm
			.06”	.25”	Steel	Galvanized				
WEEB-LUG-8.2	200	18mm x 20mm	.06”	.25”	AL	Anodized	5/16” M8	120	7.85mm	10mm
			.06”	.25”	Steel	Galvanized				
WEEB-LUG-15.8	200	18mmx 20mm	.06”	.25”	AL	Anodized	5/16” M8	120	7.85mm	10mm
			.06”	.25”	Steel	Galvanized				

Table 1: Mounting Surface Requirements

Important notes:

- The NEC section 690.43 states, "Exposed non-current carrying metal parts of module frames, equipment, and conductor enclosures shall be grounded in accordance with 250.134 or 250.136 (A) regardless of voltage."
- For Proper Equipment Grounding Conductor (EGC) and Overcurrent Protection Device (OCPD) sizing, refer to NEC sections 250.66, 250.122 and 250.166.

